



EASTAI

WUXI EAST AI MACHINERY TECHNOLOGY CO., LTD

Email: info@east-ai.com

Tel: +86-0510 6688 1071

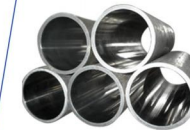
Web: www.east-ai.com

ADD: No.108, Lunan Rd, Luqu Industry Park, Wuxi, Jiangsu, China 214000



PRODUCT CATALOG

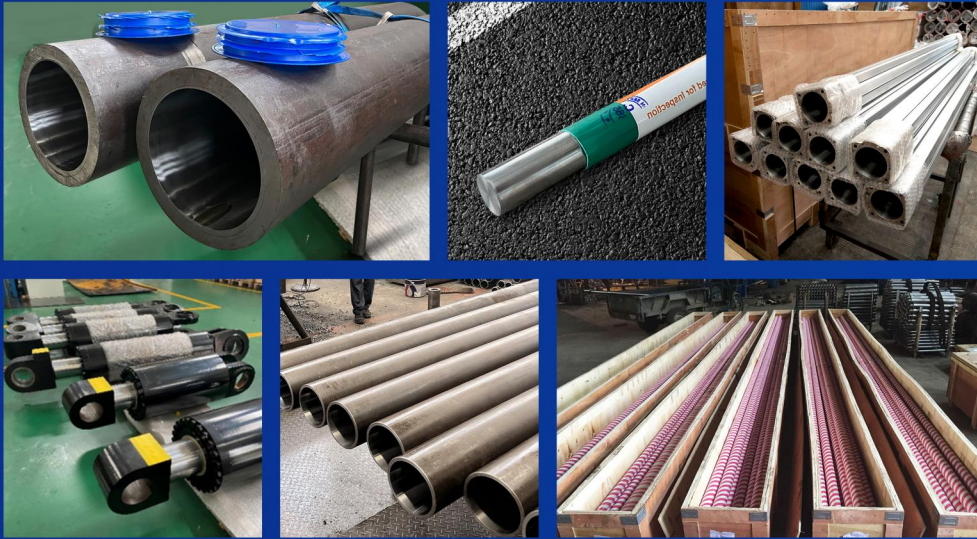
HYDRAULIC PARTS MANUFACTURER



WUXI EAST AI
MACHINERY TECHNOLOGY CO., LTD

■ PRODUCTS

WUXI EAST AI MACHINERY TECHNOLOGY CO., LTD



■ CONTENTS

HYDRAULIC PARTS MANUFACTURER

Chrome Rod

Piston Rod / Hydraulic Piston Rod
Hollow-Rod / Cr-plating Piston Rod

/ page 6

Honed Tube

Chrome Plated Honed Tube / Skived & Roller Burnished Tube
Internal Honed and Hard Chrome Plated Tube

/ page 10

Aluminum Pipe

Round Tube / SDA/CQ/CQ2B/DNC Type
Electric Cylinder Tube/ Elliptical Cylinder Tube

/ page 16

Hydraulic Cylinder

Forklift Hydraulic Cylinder / Sanitation Vehicle Hydraulic Cylinder
Excavator Hydraulic Cylinder / Agricultural Hydraulic Cylinder

/ page 20

■ COOPERATIVE PARTNER



MISSION

Enhance customer value and realize employee aspirations

VISION

To create a top-tier hydraulic brand and forge a century-old benchmark enterprise

PHILOSOPHY

Begins with customer demand and ends with customer satisfaction

VALUES

Achieve customers, benefit employees, develop the enterprise

Company Profile

Our company was established in 2006 and is located in the beautiful city of Wuxi near the seaport of Shanghai. We have three workshops and multiple advanced equipments such as Skiving roller burnishing machine, Honing machine, Cold drawing machine, Boring Machine, Grinding machine, Automatic Chrome Ping Equipment, Automatic Straightening Machine, Polish Machine, CNC, Heat Treatment Fur, etc.

Our products are certificated by SGS, BV, TUV, ABS, CCIC and ISO9001 quality assurance. A complete inspection will be done prior to delivery and a record of the inspection will be made and provided. Welcome to contact us at any time!

15+
YEARS
EXPERIENCE

2500+
CUSTOMERS

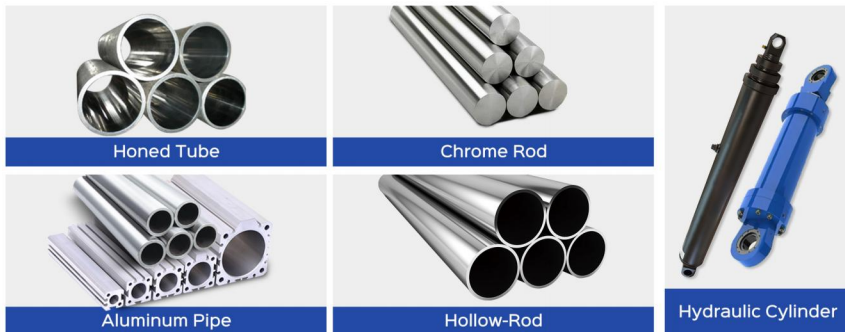
120+
MACHINING
EQUIPMENT



EQUIPMENT DISPLAY



MAIN PRODUCTS



TESTING FACILITY



2006 EAST AI was founded in 2006, mainly engaged in providing customers with full sets of well-integrated hydraulic & pneumatic technology solutions. In the initial stage, it focused on manufacturing high-quality products.

2010 The company moved to a new location, covering an area of 5,000 square meters. With the significant improvement in performance, it gradually realized the integration of industry and trade.

2014 The company proposed a development strategy of "technological innovation as the core", and established comprehensive strategic cooperations with the world-famous brands like Eaton, Komatsu and Volvo.

2018 In October, the company entered the foreign markets like Southeast Asia, Europe, the US and other countries. It marks the beginning of the company's foreign trade.

2020 Under the impact of COVID-19, we faced the challenges of drastic market competition and limited capital. Through the concerted efforts of the whole company, the total export trade volume exceeded 10 million US dollars.

2023 With the continuous expansion of industrial scale, in order to promote the development of enterprises towards diversification, refinement, and technology, EAST AI Group International Operations Center has been established.

无锡市东艾机械有限公司
Wuxi East Ai Machinery Co., Ltd

Chrome Rod

Product Introduction

WUXI EAST AI MACHINERY
TECHNOLOGY CO., LTD



Diameter		Kg/m
mm	inch	
6		0.22
6.35	1/4"	0.25
8		0.39
9.525	3/8"	0.56
10		0.62
12		0.89
12.7	1/2"	1
13		1.04
14		1.21
15		1.39
15.88	5/8"	1.56
16		1.58
18		2
19.05	3/4"	2.24
20		2.47
22		2.99
22.225	7/8"	3.05
24		3.55
25		3.86
25.4	1"	3.98
28		4.84
28.575	1.1/8"	5.04
30		5.55
31.75	1.1/4"	6.22

Diameter		Kg/m
mm	inch	
32		6.32
34.525	1.3/8"	7.35
35		7.56
36		8
38		8.91
38.1	1.1/2"	8.96
40		9.87
42		10.88
44.45	1.3/4"	12.19
45		12.49
50		15.43
50.8	2"	15.92
55		18.66
56		19.35
57.15	2.1/4"	20.15
60		22.21
63		24.49
63.5	2.1/2"	24.88
65		26.07
69.85	2.3/4"	30.1
70		30.23
75		34.71
76.2	3"	35.83
80		39.49

Diameter		Kg/m
mm	inch	
82.55	3.1/4"	42.05
85		44.58
88.9	3.1/2"	48.76
90		49.98
95		55.68
100		61.70
101.6	4"	63.69
105		68.02
110		74.66
115		81.60
120		88.85
125		96.41
127	5"	99.52
130		104.27
140		120.93
150		138.83
152.4	6"	143.3
160		157.95
170		178.31
177.8	7"	195.05
180		199.91
190		222.74
200		246.8
203.2	8"	254.76

▶ Rod Specification

1. Material: CK45, ST52, 4140, 4340, JIS45C, 40Cr, 20MnV6, 42CrMo, 40Cr, SS430, HY4520, Stainless Steel304/316, etc.
2. Diameter: Φ 6-500mm
3. Length: max 15m
4. Chrome thickness: 20micron (min)
5. Hardness of the chrome layer: 800HV(min)
6. Roughness: Ra ≤0.2u
7. Straightness: ≤ 0.2/1000 mm
8. Diameter Tolerance: ISO f7
9. Roundness: the deviation of roundness is 50% of the diameter tolerance at the most
10. Packing: Anti rust oil to be spread on rod surface and each rod to be packed in paper roll and then in wooden case.

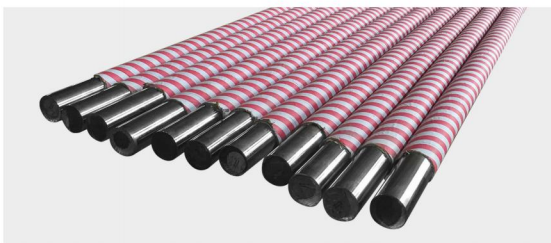
ISO f7			
OD(mm)		Tolerance(mm)	
<	≤	≤	≤
6	10	-0.013	-0.028
10	18	-0.016	-0.034
18	30	-0.02	-0.041
30	50	-0.025	-0.05
50	80	-0.03	-0.06
80	120	-0.036	-0.071

▶ CHEMICAL COMPOSITION

MATERIAL	C%	Mn%	Si%	S%	P%	V%	Ni	Cr%	Mo	Cu
CK45	0.42-0.5	0.5-0.8	0.17-0.37	≤0.035	≤0.035		≤0.25	≤0.25		≤0.25
ST52	≤0.22	≤1.6	≤0.55	≤0.04	≤0.04	0.02-0.15				
20MnV6	0.17-0.24	1.3-1.7	0.1-0.5	≤0.035	≤0.035	0.1-0.2	≤0.30	≤0.30		≤0.30
42CrMo	0.38-0.45	0.5-0.8	0.17-0.37	≤0.035	≤0.035	0.07-0.12	≤0.03	0.9-1.2	0.15-0.25	≤0.03
40Cr	0.37-0.45	0.5-0.8	0.17-0.37	≤0.035	≤0.035		≤0.3	0.8-1.1		≤0.03
HY4520	0.40-0.48	0.8-1.4	0.15-0.35	≤0.035	≤0.035	≤0.15	≤0.25	≤0.25	≤0.15	≤0.25

▶ MECHANICAL PROPERTIES

MATERIAL	T.S(Mpa)	Y.S(Mpa)	A%	CHARPY	CONDITION
CK45	610	355	15	>41J	NORMALIZED
CK45	610	355	15	>41J	INDUCTION(HRC 52-60)
CK45	800	540	20	>41J	Q+T
ST52	500	355	22		NORMALIZED
20MnV6	750	590	12	>40J	NORMALIZED
42CrMo4	980	850	14	>47J	Q+T
40Cr	1000	800	10		Q+T





Honed Tube

Product Introduction

WUXI EAST AI MACHINERY
TECHNOLOGY CO., LTD

HONED TUBE

HYDRAULIC CYLINDER TUBE

SIZE

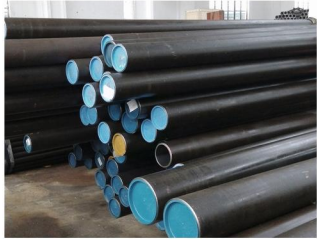
Cylinder tube ID: Φ 10-1500mm Thickness: \geq 5mm

MATERIAL

20#, 45#, E355, ST52, Q355B, Q355D, Q355E, 25Mn
27SiMn, E470, P460, P620, 1026, etc.

STANDARD

GB/T3639-2009, GB/T8713, EN10305-1: 2002
EN10305-2: 2002, ASTM A519-2006
ASTM A513-2007, GB/T1591-2008, GB/T17396-2009



- Honed Tube
- Chrome Plated Honed Tube
- Internal Honed with External Hard Chrome Plated Tube
- Internal Honed and Hard Chrome Plated Tube
- Skived & Roller Burnished Tube

CHEMICAL COMPOSITION

STEEL GRADE	C	Si	Mn	P	S	Cr	Ni	Cu	V	Al
E355(ST52)	\leq 0.22	\leq 0.55	\leq 1.60	0.025	0.025	0.250	0.250	/	/	/
20	0.17-0.23	0.17-0.37	0.35-0.65	\leq 0.035	\leq 0.035	\leq 0.25	\leq 0.30	\leq 0.25	/	/
45	0.42-0.50	0.17-0.37	0.50-0.80	\leq 0.035	\leq 0.035	\leq 0.25	\leq 0.30	\leq 0.25	/	/
Q355B	\leq 0.2	\leq 0.5	\leq 1.7	\leq 0.035	\leq 0.035	\leq 0.30	\leq 0.50	\leq 0.30	/	/
Q355D	\leq 0.18	\leq 0.5	\leq 1.7	\leq 0.030	\leq 0.025	\leq 0.30	\leq 0.50	\leq 0.30	\leq 0.15	\geq 0.015
Q355E	0.12-0.18	0.2-0.5	1.2-1.7	\leq 0.025	\leq 0.025	\leq 0.30	\leq 0.50	\leq 0.20	0.04-0.15	\geq 0.02
25Mn	0.24-0.32	1.1-1.4	1.1-1.4	\leq 0.035	\leq 0.035	\leq 0.30	\leq 0.30	\leq 0.20	/	/
27SiMn	0.22-0.29	0.17-0.37	0.7-1	\leq 0.035	\leq 0.035	\leq 0.25	\leq 0.30	\leq 0.25	/	/
1026	0.22-0.28	0.15-0.36	0.6-0.9	\leq 0.040	\leq 0.050	\leq 0.20	\leq 0.30	\leq 0.35	/	/
4130	0.28-0.33	0.15-0.35	0.40-0.60	0.040	0.040	0.80-1.10	/	/	/	/
4140	0.36-0.43	0.15-0.35	0.75-1.00	0.040	0.040	0.80-1.10	/	/	/	/

MECHANICAL PROPERTY

STEEL GRAD	COLD FINISHED(HRAD)(BK)		COLD DRAWN AND STRESS-RELIEVED(BK+S)				
	T.S bN/mm ²	Elongation 5%	T.S bN/mm ²	Y.S bN/mm ²	Elongation 5%	Hardness HB	Impact value (-20 C)J
E355(ST52)	\geq 640	\geq 5	\geq 600	\geq 520	\geq 14	/	/
20	\geq 550	\geq 8	\geq 520	\geq 400	\geq 15	170	/
45	\geq 680	\geq 5	\geq 630	\geq 520	\geq 12	190	/
Q355B	\geq 660	\geq 8	\geq 620	\geq 520	\geq 15	190	/
Q355D	\geq 660	\geq 8	\geq 620	\geq 520	\geq 15	190	\geq 27
Q355E	\geq 660	\geq 8	\geq 620	\geq 520	\geq 15	\geq 190	\geq 27
25Mn	\geq 640	\geq 8	\geq 620	\geq 510	\geq 15	190	/
27SiMn	\geq 780	\geq 5	\geq 700	\geq 580	\geq 10	220	/
1026	\geq 640	\geq 8	\geq 620	\geq 510	\geq 15	\geq 190	/

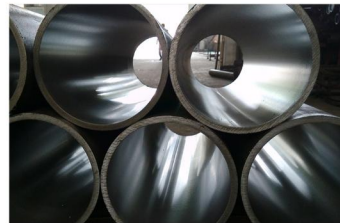
SIZE SPECIFICATIONS

Working Method	Tube ID(mm)	Length(m)	Straightness(mm/m)	Tolerance on ID	Tolerance on WT
cold-drawing	40-400	\leq 12m	0.2-0.5		\pm 5%
cold rolling	40-150	\leq 12m	0.2-0.5		\pm 5%
cold-drawing honing	40-400	\leq 8m	0.2-0.3	H8-H9	\pm 5%
cold-drawing SRB	50-300	\leq 8m	0.2-0.3	H8-H9	\pm 5%
Deep hole boring honing	250-400	\leq 8m	0.2-0.3	H8-H9	\pm 8%
Deep hole boring SRB	250-400	\leq 8m	0.2-0.3	H8-H9	\pm 8%



► We are reliable.

Raw material is mainly from some famous refinery steel mills, such as BAO STEEL, Tianjin, and Chengdu etc, which are the best and largest raw material manufacturers in China.
 We have experienced technicians and skilled workers and provide you with high quality and efficient products.
 We have advanced equipments: cold drawing machine, honing machine, skiving & roller burnishing machine, centerless grinding machine, straightening machine, polishing machine, etc. Delivery on time and best after-sale service.

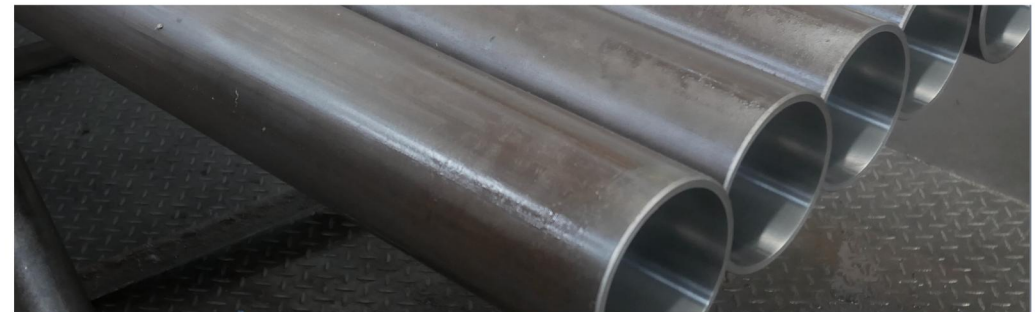
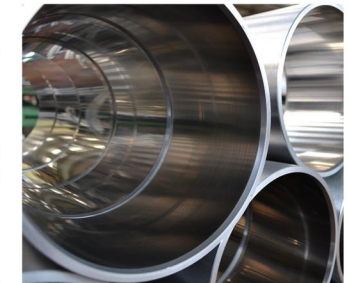


TOLERANCE

Tolerance	I.D Tolerance			Tolerance of wall thickness	
	Size of I.D	H8	H9		
30	0.033	0.052	0.084	<120mm(O.D) ±5% ≥120mm up to 210mm ±7.5% >210mm ±10%	
>30-50	0.039	0.062	0.1		
>50-80	0.046	0.074	0.12		
>80-120	0.054	0.087	0.14		
>120-180	0.063	0.1	0.16		
>180-250	0.072	0.115	0.185		
>250-315	0.081	0.13	0.21		
>315-400	0.089	0.14	0.23		

PROCESSING FORM

Processing form	I.D mm	length	Straightness	I.D tolerance	I.D Roughness (RA)
Honed	40-500	≤12M	0.5-1/1000	H8-H9	0.4-0.8μm
SRB	50-250	≤13M		H8	0.1-0.4μm



SIZE RANGE

ID(mm)	OD(mm)	WT(mm)	ID(mm)	OD(mm)	WT(mm)	ID(mm)	OD(mm)	WT(mm)
40	50	5	90	100	5	140	156	8
40	52	6	90	105	7.5	140	160	10
40	55	7.5	90	110	10	140	165	12.5
40	58	9	90	114	12	140	168	14
50	60	5	95	105	5	140	170	15
50	65	7.5	95	110	7.5	140	180	20
50	70	10	100	110	5	150	170	10
60	70	5	100	115	7.5	150	175	12.5
60	72	6	100	120	10	150	180	15
60	75	7.5	100	125	12.5	160	180	10
60	80	10	100	127	13.5	160	185	12.5
63	73	5	100	130	15	160	190	15
63	75	6	110	125	7.5	160	200	20
63	76	6.5	110	130	10	170	190	10
63	78	7.5	110	140	15	170	195	12.5
63	80	8.5	115	130	7.5	170	200	15
63	83	10	115	135	10	180	200	10
70	80	5	120	135	7.5	180	205	12.5
70	82	6	120	140	10	180	210	15
70	85	7.5	120	145	12.5	180	220	20
70	90	10	120	150	15	200	220	10
75	85	5	125	140	7.5	200	225	12.5
75	90	7.5	125	145	10	200	230	15
75	95	10	125	150	12.5	200	235	17.5
80	90	5	125	152	13.5	200	245	22.5
80	92	6	125	155	15	220	250	15
80	95	7.5	125	160	17.5	220	270	25
80	100	10	130	145	7.5	220	273	26.5
80	102	11	130	150	10	240	270	15
80	105	12.5	130	160	15	250	290	20
80	110	15	135	160	12.5	250	299	24.5

IMPERIAL SIZE HONED TUBE

(OTHER SIZES UPON REQUEST)

ID(mm)	OD(mm)	WT(mm)	ID(mm)	OD(mm)	WT(mm)	ID(mm)	OD(mm)	WT(mm)
63.5	76.2	6.35	88.9	101.6	6.35	114.3	127	6.35
63.5	82.55	9.525	88.9	107.95	9.525	114.3	139.7	12.7
76.2	88.9	6.35	101.6	114.3	6.35	127	139.7	6.35
76.2	95.25	9.525	101.6	120.65	9.525	127	152.4	12.7

Aluminum Pipe

Product Introduction

WUXI EAST AI MACHINERY TECHNOLOGY CO., LTD



Technical Parameters

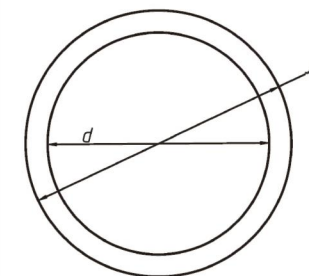
ALUMINUM TUBE

1. Material: Alloy 6061, 6063. T5,T6	11. ID tolerance: H8-H10
2. Surface treatment: Anodized, sandblast	12. ID ovality: 1/2H8~H10
3. OD: 20mm -336mm	13. WT tolerance: +/-3mm
4. ID: 16mm -320mm	14. Length tolerance: 0/+0.5mm
5. WT: 0.8mm -9mm	15. Straightness: 1.5/1000
6. Elongation: 8%	16. ID roughness: Ra0.2-0.4um
7. Body hardness: HW 12-15	17. Oxide film thickness: 25-55um
8. Microhardness: HV200-400KG/mm ²	18. Technology: extrusion-cold drawn, heat treatment, precision honed, polishing, anodizing
9. Tensile strength: 160 MPa	
10. Yield strength: 110MPa	

Inside Dia (mm)	ID Tolerance (mm)			
	H7	H8	H9	H10
≤30	+0.021/0	+0.033/0	+0.052/0	+0.084/0
30 - ≤50	+0.025/0	+0.039/0	+0.062/0	+0.100/0
50 - ≤80	+0.030/0	+0.046/0	+0.074/0	+0.120/0
80 - ≤120	+0.035/0	+0.054/0	+0.087/0	+0.140/0
120 - ≤180	+0.040/0	+0.063/0	+0.100/0	+0.160/0
180 - ≤250	+0.046/0	+0.072/0	+0.115/0	+0.185/0
250 - ≤315	+0.052/0	+0.081/0	+0.130/0	+0.210/0
315 - ≤700	+0.057/0	+0.089/0	+0.140/0	+0.230/0

Round Tube

MAIN TECHNICAL PARAMETERS



ID(d)	OD(D)	WT(mm)
Φ 16	Φ 20	2
Φ 20	Φ 25	2.5
Φ 25	Φ 29	2
Φ 25	Φ 30	2.5
Φ 32	Φ 37	2.5
Φ 40	Φ 44	2
Φ 40	Φ 45	2.5
Φ 45	Φ 50	2.5
Φ 48	Φ 60	6
Φ 49	Φ 76	13.5
Φ 50	Φ 54	2
Φ 50	Φ 55	2.5
Φ 50	Φ 57.2	3.6
Φ 55	Φ 60.5	2.75
Φ 63	Φ 68	2.5
Φ 63	Φ 69	3
Φ 63	Φ 70	3.5

ID(d)	OD(D)	WT(mm)
Φ 70	Φ 75	2.5
Φ 70	Φ 76	3
Φ 75	Φ 80	2.5
Φ 80	Φ 86	3
Φ 80	Φ 87	3.5
Φ 100	Φ 104	2
Φ 100	Φ 106	3
Φ 100	Φ 107	3.5
Φ 125	Φ 133	4
Φ 140	Φ 150	5
Φ 150	Φ 160	5
Φ 160	Φ 170	5
Φ 180	Φ 190	5
Φ 200	Φ 210	5
Φ 250	Φ 262	6
Φ 300	Φ 312	6
Φ 320	Φ 336	8

European Standard Type B Aluminum Pneumatic Cylinder Tube



European Standard Type C Aluminum Pneumatic Cylinder



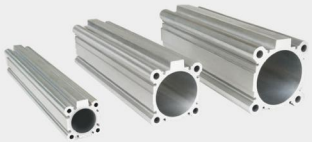
I M type aluminum tube
(SI\SU\B)



I SDA Type



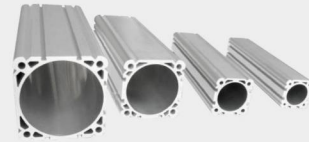
I CQ Type



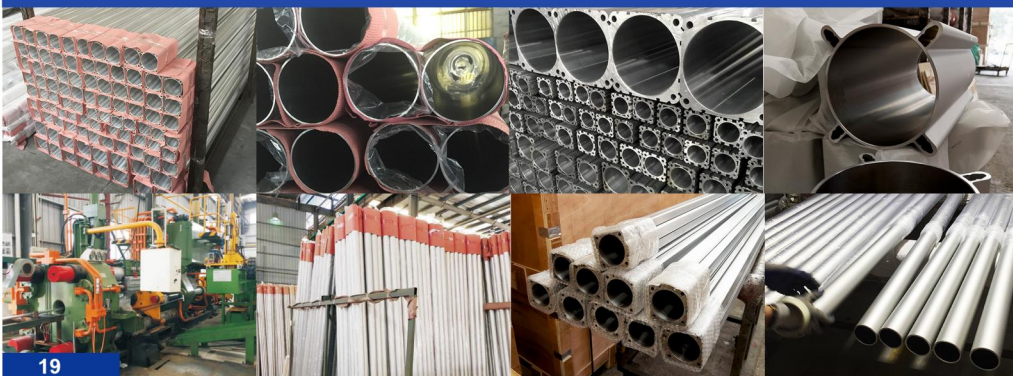
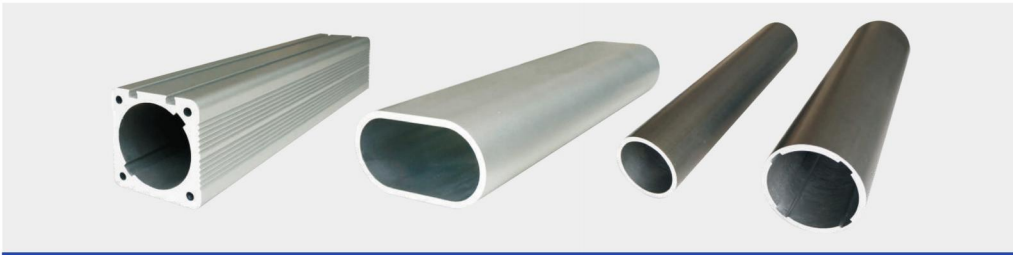
I CQ2B Type



I DNC Type



OTHERS: Electric Cylinder Tube/ Elliptical Cylinder Tube
Hard Anodizing and Telescopic Cylinder Tube



Hydraulic Cylinder

Product Introduction

WUXI EAST AI MACHINERY TECHNOLOGY CO., LTD

WE ONLY DO THE BEST.

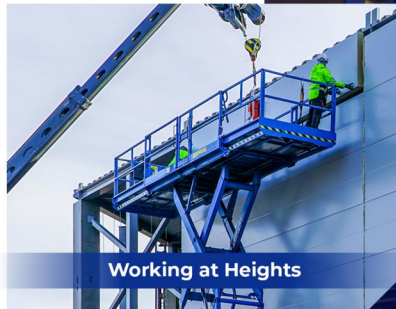
East Ai Machinery focus on manufacturing all kinds of cylinders used for Machinery, Equipment, Metallurgy, Water Conservancy, Mining, Offshore, Truck, etc. We also can design or do OEM in accordance with client's special requirements. We have our own professional design team, advanced production equipment, and strict quality control system to improve the reliability, safety and economy of products. In order to create real benefit for clients, East-Ai will offer a full set of services, such as consulting solutions, products installation, technical support, etc.



Construction Machinery



Agricultural Machinery



Working at Heights



- Piston type hydraulic cylinder
- Telescopic type hydraulic cylinder
- Plunger type hydraulic cylinder

- Welded hydraulic cylinder
- Flange mounted hydraulic cylinder
- Tie rod hydraulic cylinder

- Double acting hydraulic cylinder
- Single acting hydraulic cylinder
- Servo hydraulic cylinder
- Multistage hydraulic cylinder

CUSTOM HYDRAULIC CYLINDER/ PNEUMATIC CYLINDER

(We produce as per client's drawing or design with technical requirements.)

1. Application: machinery, mine, shipping, metallurgy, water conservancy, offshore, etc.
2. Working length: 50mm to 16000mm
3. Tube ID range: 40 to 1000 mm (1/2 - 40 inch)
4. Piston diameter range: 12 to 500 mm (1/2 - 20 inch)
5. Working pressure: Max 700 bar (10150 PSI)
6. Seal type: Hallite, Parker, Merkel or in accordance with client's requirement.
7. Painting: follow with customer requirement.
8. Certificate: DNV, ABS, Lloyds, BV, SGS, GL, etc.
9. Material: ST52, CK45 or Stainless Steel, etc.
10. Packing: Bubble-wrap packing, then in wooden case.



TIPS.

OEM in accordance with client's drawing or requirements.
We also can design by ourselves.
We can produce the power units of cylinder.

Place your trust in us!



**FORKLIFT
HYDRAULIC CYLINDER**



**EXCAVATOR
HYDRAULIC CYLINDER**



**SANITATION VEHICLE
HYDRAULIC CYLINDER**

- Sliding Hydraulic Cylinder
- Box lock Hydraulic Cylinder
- Lifting Hydraulic Cylinder



**AGRICULTURAL
HYDRAULIC CYLINDER**

- Steering Hydraulic Cylinder
- Reel Hydraulic Cylinder
- Unloading Hydraulic Cylinder
- Header Hydraulic Cylinder



**ELEVATOR
HYDRAULIC CYLINDER**



**STEERING
HYDRAULIC CYLINDER**

**LIFTING
HYDRAULIC CYLINDER**

**SUPPORT LEG
HYDRAULIC CYLINDER**

**FLOATING
HYDRAULIC CYLINDER**

**ENGINEERING
HYDRAULIC CYLINDER**

- Support Hydraulic Cylinder
- Engineering Hydraulic Cylinder



- UNDERSTAND REQUIREMENTS
- ACCOUNT FOR QUOTATION
- PARAMETER DETERMINATION
- SIGN CONTRACT
- PAYMENT OF DEPOSIT
- VOLUME PRODUCTION
- PACKAGING STORAGE
- CHECKOUT DELIVERY

In the era of technology leading the future, relying on powerful and advanced international production processes and technological equipment, we strive to maximize our professional skills. We firmly believe that through continuous efforts, we can provide excellent products and superior services to domestic and foreign customers, become the most professional supplier in the industry, and become the most reliable partner for our customers.

For a long time, we have served relevant industries around the world with professional technology and comprehensive services, achieving outstanding performance. The product is widely used in industrial fields such as machining, metallurgical equipment, printing machinery, logistics equipment, and exported to countries and regions such as Russia, the United States, Australia, the United Kingdom, France, Germany, Italy, Spain, Iraq, Southeast Asia, Indonesia, Japan, India, Thailand, the Middle East, Saudi Arabia, Iranian, etc.

